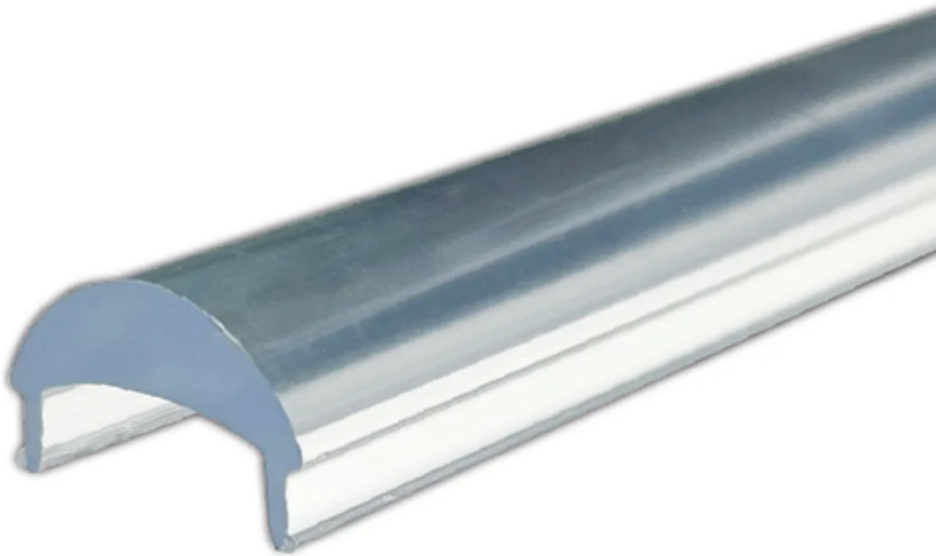


## Discover the Magic of LED Profiles: Transform Your Space with Brilliant Lighting!

In today's world, effective lighting plays a crucial role in enhancing the aesthetics and functionality of any space. Enter [LED profiles](#), a modern solution that revolutionizes how we approach lighting design. These sleek, versatile fixtures not only provide illumination but also add a touch of sophistication to residential and commercial environments alike. Whether you're illuminating a cozy living room or a bustling office, LED profiles offer a myriad of benefits that go beyond mere brightness. They allow for creative expression while ensuring energy efficiency, making them an essential component in contemporary lighting solutions.

**NUEVO**



### Understanding LED Profiles

LED profiles are specialized housings designed to hold LED strips, providing a clean and finished look while optimizing light distribution. These profiles consist of an aluminum or plastic casing that encases the LED strips, featuring a diffuser lens to soften and spread the light evenly. Unlike traditional lighting options that often result in harsh shadows or glaring bulbs, LED profiles offer a more uniform light output, which enhances visibility and comfort in any setting. Additionally, their design allows for easy installation and maintenance, setting them apart from more cumbersome lighting fixtures. LED profiles can be customized to fit various lengths and shapes, ensuring they can meet the specific needs of any space.

### Types of LED Profiles

There are several types of LED profiles, each suited for different applications and aesthetic preferences. Surface-mounted profiles are affixed directly onto walls or ceilings, making them ideal for spaces with limited installation depth. Recessed profiles, on the other hand, are installed into wall or ceiling cavities, providing a seamless appearance that blends into the architecture. Corner profiles are specifically designed to fit into the corners of a room, maximizing the use of space while delivering a unique lighting effect. Each type offers unique features; for instance, surface-mounted profiles can often serve as decorative elements, while recessed profiles create a more minimalist look. Understanding these types allows homeowners and designers to select the best option for their specific lighting needs.

### Applications of LED Profiles

LED profiles can be utilized in a variety of environments, showcasing their versatility and appeal. In residential settings, they can illuminate kitchens, bathrooms, or living areas, adding an elegant touch to the decor. For instance, a friend of mine recently installed LED profiles above her kitchen cabinets, creating an inviting glow that enhances the space during evening gatherings. In commercial spaces, LED profiles are often used in offices, retail stores, and restaurants, where effective lighting is essential for both functionality and ambiance. They can highlight products on display or create a welcoming atmosphere for customers. Furthermore, in industrial settings, LED profiles can provide essential lighting in work areas, ensuring safety and efficiency. The adaptability of LED profiles opens

up endless possibilities for creative interior design.

## **Advantages of Using LED Profiles**

The benefits of LED profiles extend far beyond aesthetic appeal. One of the most significant advantages is their energy efficiency; LED lighting consumes considerably less power than traditional incandescent bulbs, leading to lower electricity bills and a reduced carbon footprint. Additionally, LED profiles boast an impressive lifespan, often lasting up to 25 times longer than conventional lighting options. This longevity translates to fewer replacements and less waste. Furthermore, their versatility allows them to fit into various design schemes, whether modern, industrial, or minimalist. As a result, they enhance the overall ambiance of a space, creating a warm and inviting environment that aligns with contemporary design trends. The combination of functionality and style makes LED profiles a smart choice for anyone looking to elevate their lighting solutions.

## **Enhancing Your Space with LED Profiles**

In summary, LED profiles represent a transformative lighting solution that combines efficiency, longevity, and aesthetic appeal. By understanding the different types and applications of these fixtures, you can make informed decisions that will enhance your space, whether at home or in a commercial setting. As we've explored, the advantages of LED profiles are compelling, making them a valuable addition to any lighting design strategy. Embrace the magic of LED profiles and experience how they can illuminate your surroundings while complementing your unique style.